

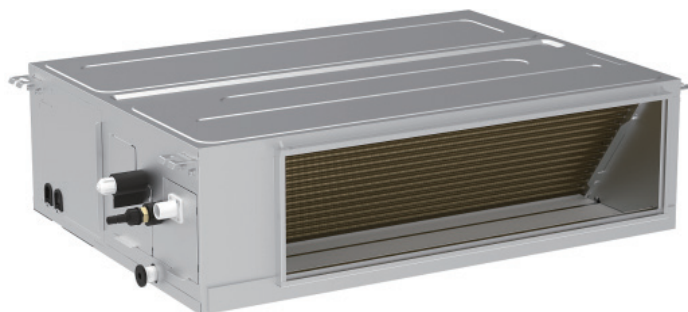
1. Summary

Indoor Unit:

GFH(09)CA-K6DNA1B/I
GFH(09)CA-K6DNA1C/I
GFH(12)CA-K6DNA1B/I
GFH(12)CA-K6DNA1C/I
GFH(18)CB-K6DNA1B/I
GFH(18)CB-K6DNA1C/I



GFH(24)CC-K6DNA1B/I
GFH(24)CC-K6DNA1C/I



Model list:

No.	Model	Product code
1	GFH(09)CA-K6DNA1B/I	CF022N3610
2	GFH(09)CA-K6DNA1C/I	CF022N3660
3	GFH(12)CA-K6DNA1B/I	CF022N3620
4	GFH(12)CA-K6DNA1C/I	CF022N3680
5	GFH(18)CB-K6DNA1B/I	CF022N3630
6	GFH(18)CB-K6DNA1C/I	CF022N3650
7	GFH(24)CC-K6DNA1B/I	CF022N3640
8	GFH(24)CC-K6DNA1C/I	CF022N3670

2. Specifications

2.1 Specification Sheet

Parameter		Unit	Value	
Model			GFH(09)CA-K6DNA1B/I	GFH(09)CA-K6DNA1C/I
Product Code			CF022N3610	CF022N3660
Power Supply	Rated Voltage	V~	220-240	220-240
	Rated Frequency	Hz	50	50
	Phases		1	1
Cooling Capacity		W	2650	2650
Heating Capacity		W	2800	2800
Air flow volume		m ³ /h	700/670/640/610/580/550/520	560/450/340/220
Dehumidifying Volume		L/h	0.8	0.8
Fan Type			Centrifugal	Centrifugal
Fan Diameter-height		mm	Φ138.6-143	Φ138.6-143
Fan Motor Speed		rpm	Cooling:1280/1200/1150/1100/1060/1020/980 Heating:1280/1200/1150/1100/1060/1020/980	Cooling:950/830/710/600 Heating:950/830/710/600
Fan Motor Power Output		W	/	/
Fan Motor Power Input		W	50	65
Motor Full Load Amp(FLA)		A	/	/
Fan Motor Capacitor		μF	/	2
Evaporator Material			Inner Groove Copper Tube-Aluminum fin	Inner Groove Copper Tube-Aluminum fin
Evaporator Pipe Diameter		mm	Φ5	Φ5
Evaporator Number of Rows-Fin Pitch		mm	2-1.4	2-1.4
Evaporator Length(L)XHeight(H)XWidth(W)		mm	547X228.6X22.8	547X228.6X22.8
Fuse Current		A	5	5
Sound Pressure Level		dB (A)	41/39/38/37/36/35/34	32/28/25/22
Sound Power Level		dB (A)	57/55/54/53/52/51/50	47/43/40/37
Dimension of Outline(LXDXH)		mm	710X450X200	710X450X200
Dimension of Carton Box(LXWXH)		mm	1005X565X260	1005X565X260
Dimension of Package(LXWXH)		mm	1008X568X275	1008X568X275
Net Weight		kg	18.5	18.5
Gross Weight		kg	22.5	22.5
Liquid pipe		inch	1/4"	1/4"
Gas Pipe(to indoor unit)		inch	3/8"	3/8"

The above data is subject to change without notice. Please refer to the nameplate of the unit.

Parameter		Unit	Value	
Model			GFH(12)CA-K6DNA1B/I	GFH(12)CA-K6DNA1C/I
Product Code			CF022N3620	CF022N3680
Power Supply	Rated Voltage	V~	220-240	220-240
	Rated Frequency	Hz	50	50
	Phases		1	1
Cooling Capacity		W	3500	3500
Heating Capacity		W	4000	4000
Air flow volume		m ³ /h	650/560/520/480/450/410/380	600/540/420/300
Dehumidifying Volume		L/h	1.4	1.4
Fan Type			Centrifugal	Centrifugal
Fan Diameter-height		mm	Φ138.6-143	Φ138.6-143
Fan Motor Speed		rpm	Cooling:1280/1200/1150/1100/1060/1020/980 Heating:1280/1200/1150/1100/1060/1020/980	Cooling:1160/1030/930/810 Heating:1160/1030/930/810
Fan Motor Power Output		W	/	/
Fan Motor Power Input		W	50	75
Motor Full Load Amp(FLA)		A	/	/
Fan Motor Capacitor		μF	/	3.5
Evaporator Material			Inner Groove Copper Tube-Aluminum fin	Inner Groove Copper Tube-Aluminum fin
Evaporator Pipe Diameter		mm	Φ5	Φ5
Evaporator Number of Rows-Fin Pitch		mm	3-1.4	3-1.4
Evaporator Length(L)XHeight(H)XWidth(W)		mm	547X228.6X34.2	547X228.6X34.2
Fuse Current		A	5	5
Sound Pressure Level		dB (A)	39/37/36/35/34/33/32	36/34/31/27
Sound Power Level		dB (A)	55/53/52/51/50/49/48	51/49/46/42
Dimension of Outline(LXDXH)		mm	710X450X200	710X450X200
Dimension of Carton Box(LXWXH)		mm	1005X565X260	1005X565X260
Dimension of Package(LXWXH)		mm	1008X568X275	1008X568X275
Net Weight		kg	19	19
Gross Weight		kg	23	23
Liquid pipe		inch	1/4"	1/4"
Gas Pipe(to indoor unit)		inch	3/8"	3/8"

The above data is subject to change without notice. Please refer to the nameplate of the unit.

Parameter		Unit	Value	
Model			GFH(18)CB-K6DNA1B/I	GFH(18)CB-K6DNA1C/I
Product Code			CF022N3630	CF022N3650
Power Supply	Rated Voltage	V~	220-240	220-240
	Rated Frequency	Hz	50	50
	Phases		1	1
Cooling Capacity		W	5000	5000
Heating Capacity		W	5500	5500
Air flow volume		m ³ /h	880/840/810/790/770/750/730	800/720/610/420
Dehumidifying Volume		L/h	1.8	1.8
Fan Type			Centrifugal	Centrifugal
Fan Diameter-height		mm	Φ138.6-143	Φ138.6-143
Fan Motor Speed		rpm	Cooling:1300/1250/1200/1180/1150/1130/980 Heating:1300/1250/1200/1180/1150/1130/980	Cooling:1060/920/810/700 Heating:1060/920/810/700
Fan Motor Power Output		W	/	/
Fan Motor Power Input		W	75	80
Motor Full Load Amp(FLA)		A	/	/
Fan Motor Capacitor		μF	/	3.5
Evaporator Material			Inner Groove Copper Tube-Aluminum fin	Inner Groove Copper Tube-Aluminum fin
Evaporator Pipe Diameter		mm	Φ7	Φ7
Evaporator Number of Rows-Fin Pitch		mm	3-1.4	3-1.4
Evaporator Length(L)XHeight(H)XWidth(W)		mm	847X228.6X38.1	847X228.6X38.1
Fuse Current		A	5	5
Sound Pressure Level		dB (A)	41/39/39/38/38/37/34	36/31/28/25
Sound Power Level		dB (A)	57/55/55/54/54/53/50	51/46/43/40
Dimension of Outline(LXDXH)		mm	1010X450X200	1010X450X200
Dimension of Carton Box(LXWXH)		mm	1305X565X260	1305X565X260
Dimension of Package(LXWXH)		mm	1308X568X275	1308X568X275
Net Weight		kg	25	25
Gross Weight		kg	30	30
Liquid pipe		inch	1/4"	1/4"
Gas Pipe(to indoor unit)		inch	1/2"	1/2"

The above data is subject to change without notice. Please refer to the nameplate of the unit.